

# BRADSTONE

## Terra Walling Construction Information & Installation Guide

Bradstone Terra Walling is available in two course heights and various stone lengths. Jumper Stones offer a random coursing option and there is a choice of corner details. All stones are frogged, plain on one return and textured on the other for reveals.

Coursing stones are produced in the following heights:

<u>Nominal sizes</u>	<u>Actual Sizes</u>
4" (100mm)	3 5/8" (90mm)
6" (150mm)	5 5/8" (140mm)

Each of the two course heights are supplied with six different lengths as follows: 8"(200mm), 9"(225mm), 10"(250mm), 11"(275mm), 12"(300mm), 13"(325mm). These different lengths will be supplied in random quantities.

Jumper Stones are produced in a single height:

<u>Nominal Sizes</u>	<u>Actual Sizes</u>
10" (250mm)	9 5/8" (240mm)

Jumper Stone Usage:

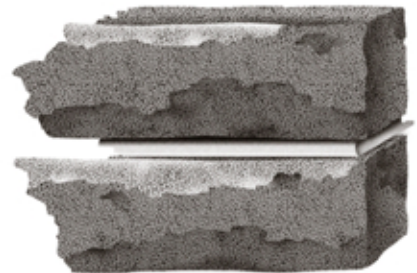
- Approximately 20% of finished wall
- Used to break course of 4" to 6" stones

Jumper stones are provided in 11" (275mm), 17"(425mm) and 21"(525mm) lengths. The above nominal stone sizes have an allowance for a 3/8"(10mm) bed joint between Jumpers and 3/8"(10mm) bed between stones.

- All units are supplied 90mm on bed depth.
- All nominal dimensions include mortar joints.
- 45 degree units are available upon request.

## Jointing, Pointing & Brick Ties

- Use standard masonry cement (Type 'N') or (Type 'S')
- All false joints in split stones to be pointed
- Round or concave joint is recommended. A slight recess is acceptable
- Brick ties vertically placed at 20"(500mm) spacing to course with terra walling



## Suggested Pigments for Mortar Colours

Traditionally stonework is pointed with matching mortars; the list shown offers suggested pigments for mortar colours. The dosage is based per bag of masonry cement.

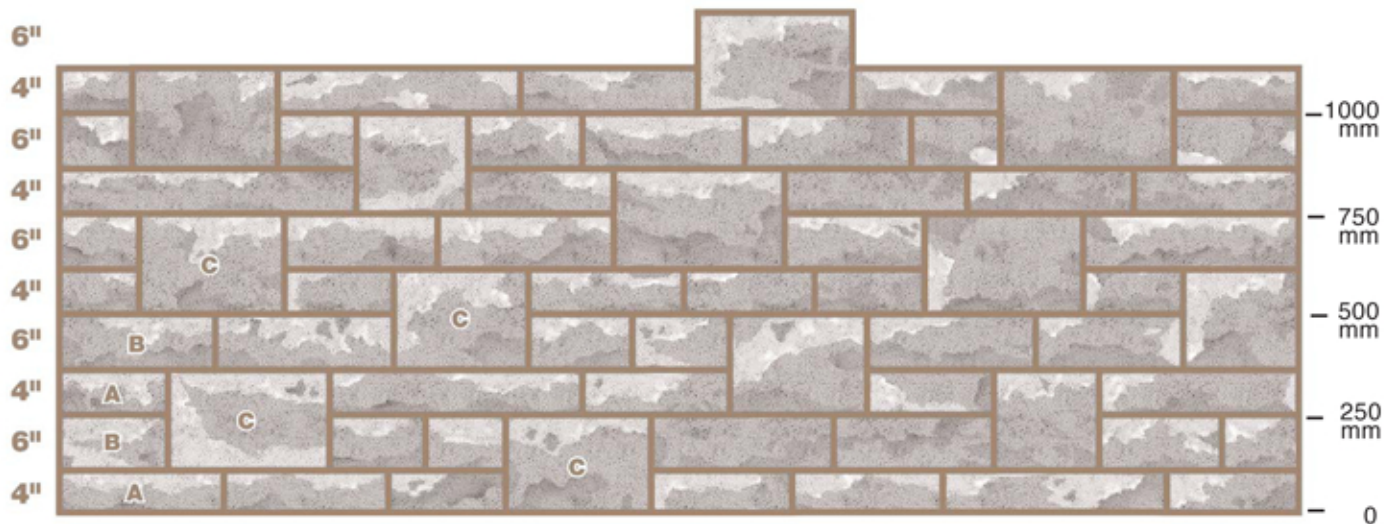
<u>Stone Colour</u>	<u>Pigment</u>	<u>Dosage</u>
Cotswold	Chamois	up to 2 cups per bag
North Cerney	Black	up to 1 cup per bag
Weathered York	Acorn	up to 2 cups per bag
Weathered Cotswold	Chamois	up to 2 cups per bag
Kingston Grey	Natural	no pigment required
Essex Blend	Natural	no pigment required

Note: It is advisable that a small sample panel (4' x 4') be erected and allowed to dry out and be parties prior to the main work commencing, as the colour of the mortar can dramatically alter the visual appearance of the wall.

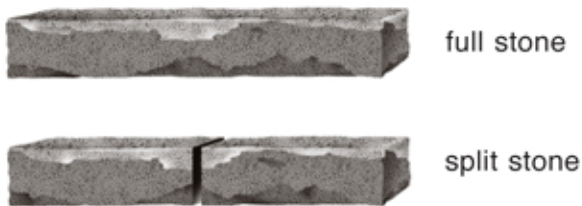
## Installing Terra Walling

Terra Walling stones should be carefully selected to ensure a mix of stone sizes and textures.

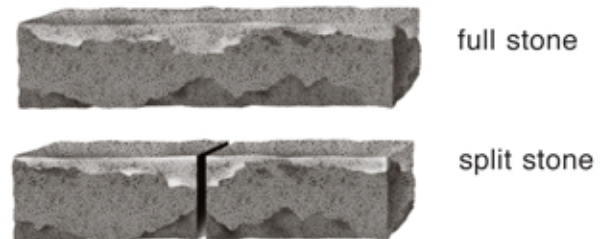
### Coursing Detail



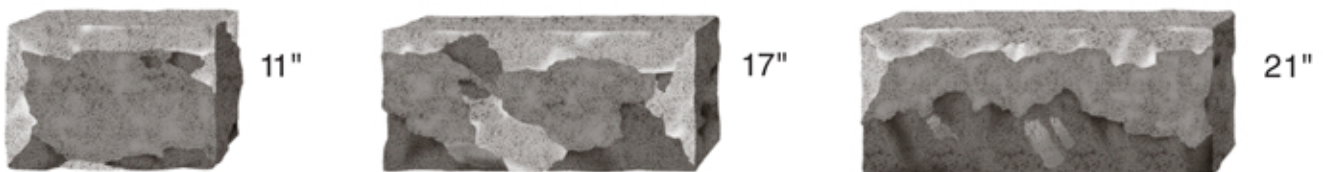
#### **A** 4" Coursing Stone



#### **B** 6" Coursing Stone



#### **C** 10" Jumper Stones



- A, B, C Stones have one textured end for returns on corners and reveals for Jambs of windows and doors
- A, B Split stones – false joint to be filled when placed. False joint is at different locations on various stones, resulting in stone lengths of 8"-13". These can be split at the false joint.

### Cutting Stones

Cutting stones to length with concrete saw:

- Type 'C' jumper should not be cut
- When cutting proper length required for type 'A' and 'B' stones, do not attempt to dress saw cut; install stone in wall with straight cut.

